

**LX-100**



LX-100 is the best 1080p HD digital USB microscope for stepping up from stereo zoom microscope, mantis or magnifier lamp. With 60 frames per second and 1080 HD image quality, what you see on LCD is the same as what you see through microscope eye pieces. 1080p HD makes ergonomic inspection without eye strain and work fatigue an affordable reality.

15x-100x  
Zoom

3D  
View

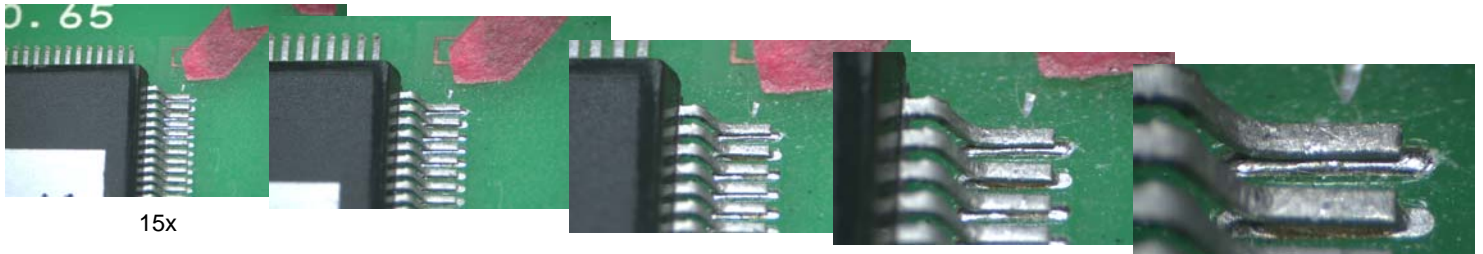
Capture  
Images

Measurement  
Software

3D rotational angle view and 15x to 100x zoom of LX-100 provide unparalleled real-time 3D view for PCB and Medical Devices inspection that is simple to use and remarkable in image quality. Long working distance allows soldering rework and assembly by watching LCD screen. HD60 camera offers SD card for capturing image and video without a computer. With built in USB2.0 port and measurement software, performing dimensional measurements on Windows computer is as simple as mouse clicks. All of these latest HD camera technology and zoom lens integrated in a package that is remarkable and affordable.

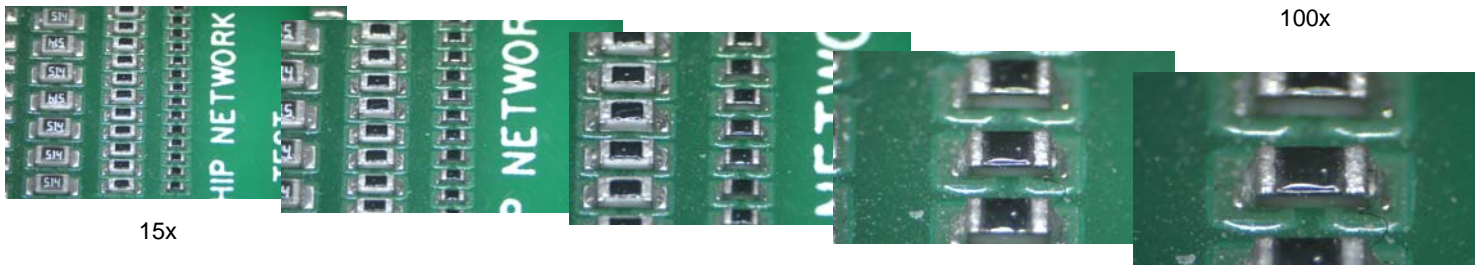


## 15x-100x Zoom (up to 1x-2,000x)



15x

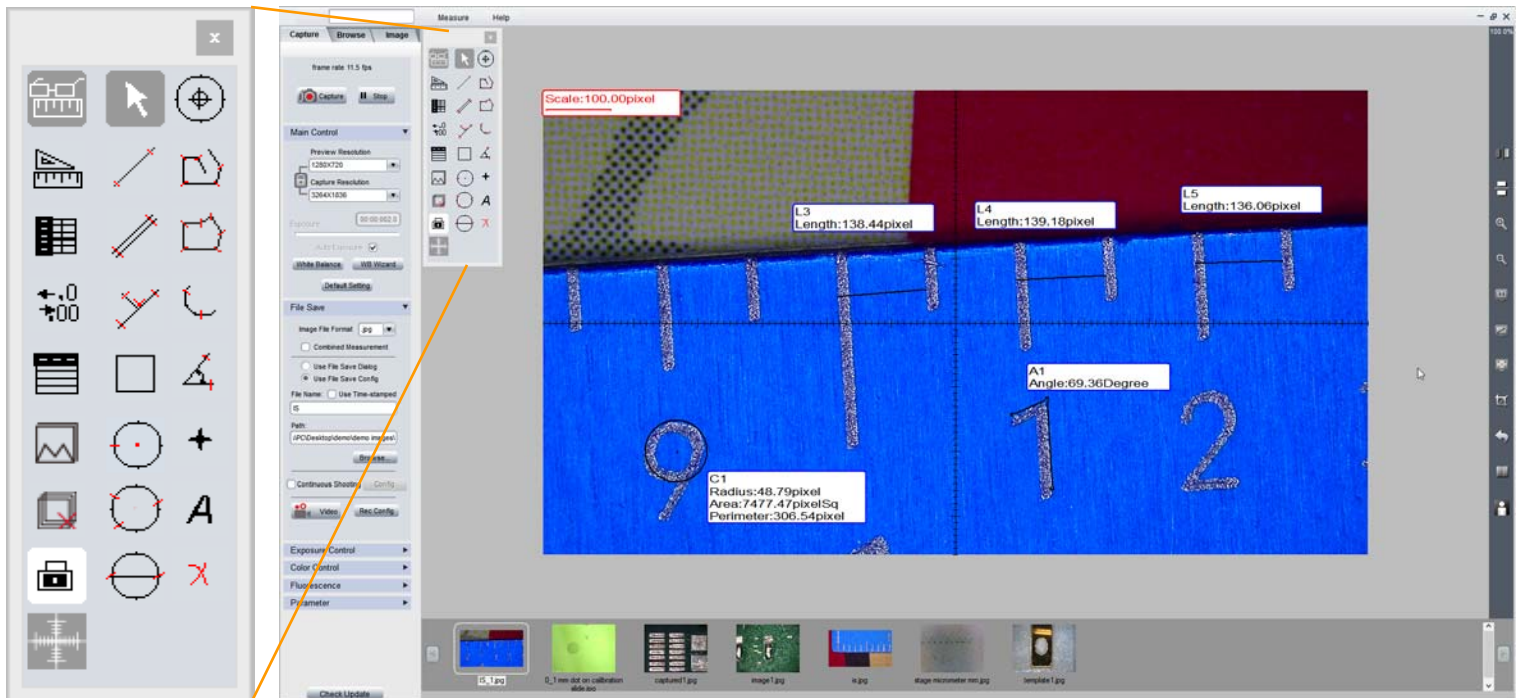
100x



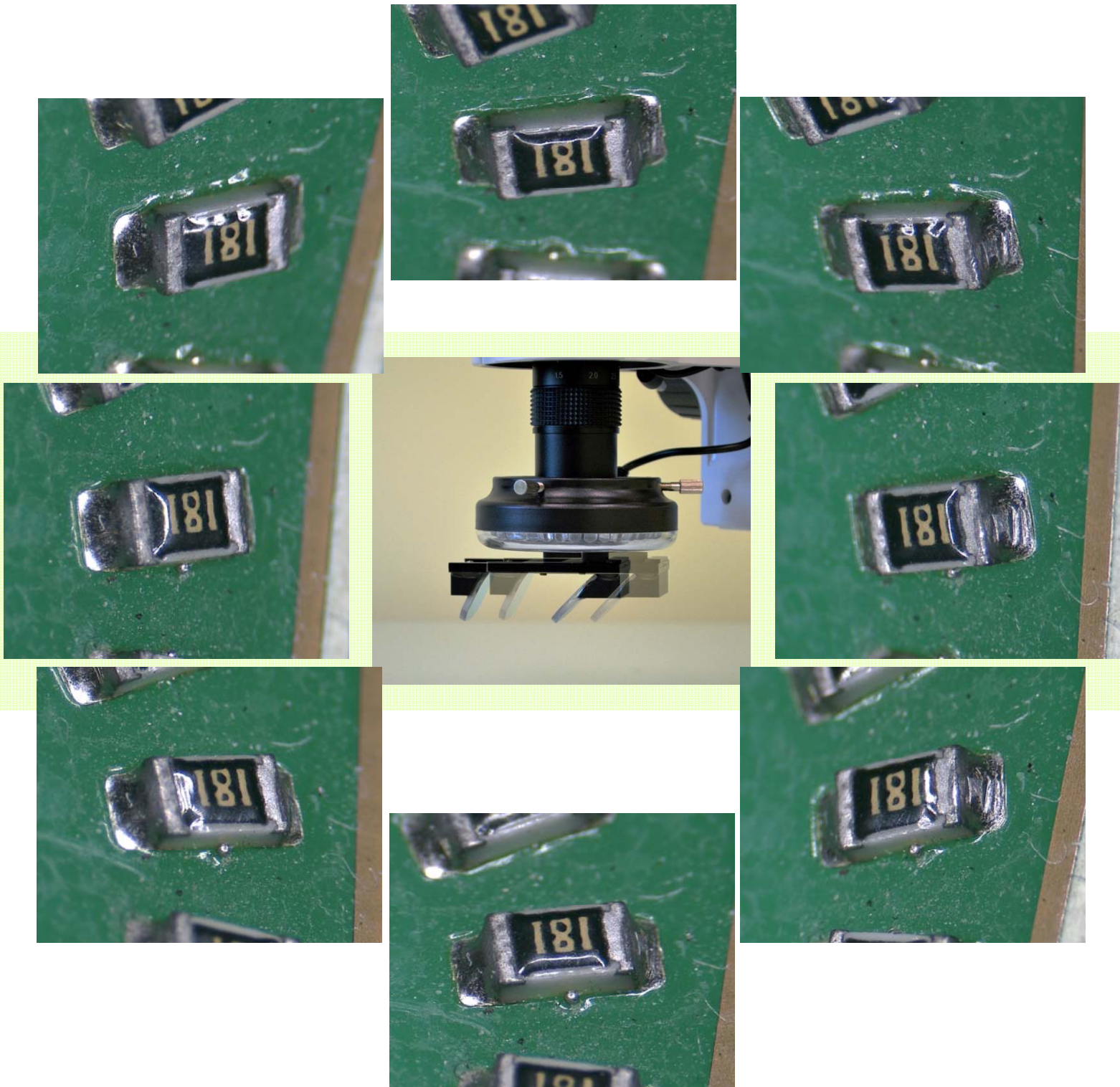
15x

100x

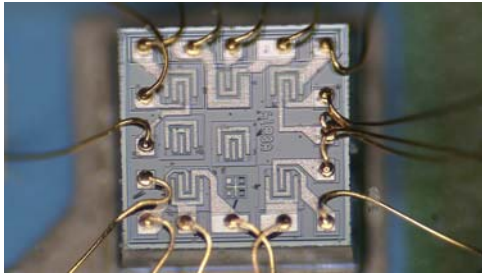
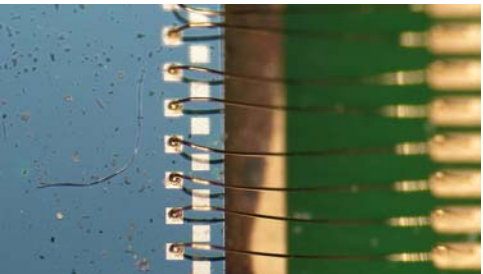
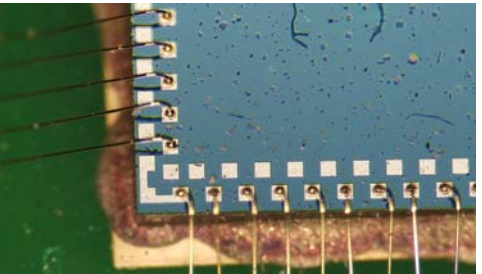
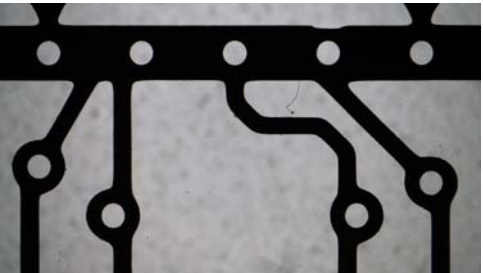
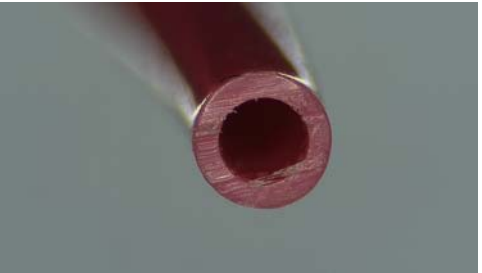
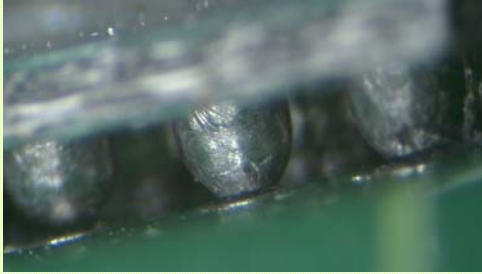
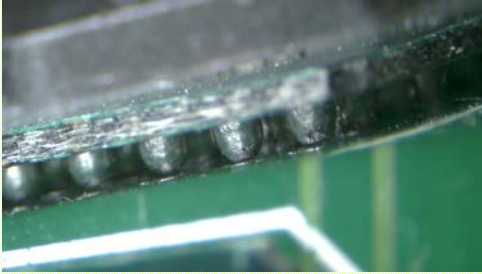
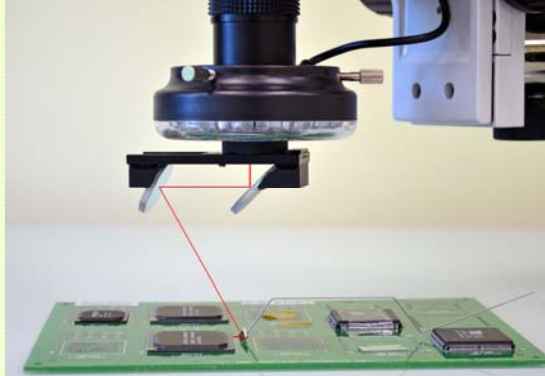
## Measurement with Simple Mouse Click



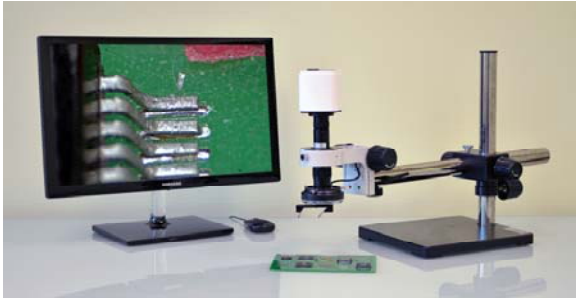
Quick switching 3D angle view and straight view



LX-100 with 3D BGA Inspection Mirror

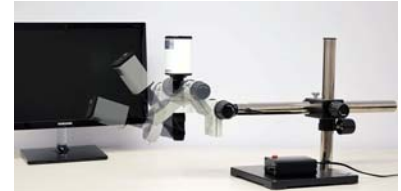


Models and Options



**LX-100-HD60-BS**

Boom Stand & LCD-24

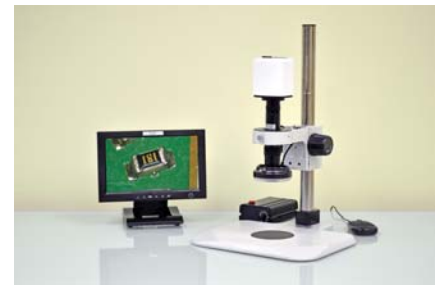


Multi tilting angle multi position boom stand



**LX-100-HD60-TSBL**

Track Stand Back Light & LCD-24



10" LCD & Post Stand



**LX-100-HD10L-BL**

10" LCD built-in & Boom Stand



10" LCD built-in & Track Stand



**LX-100-HD60L10FM-BS**

10" LCD flex mounted & Boom Stand



10" LCD flex mount & Track Stand

# Specifications

LX-100 Specifications	
HD-60	1080p HD digital USB camera 6MP, HDMI, USB2.0, SD card, measurement software. 60 FPS
HD-10L2	1080p HD camera 2MP with built-in 10" HD LCD (1280x800) SD card. 60 FPS
LCD-10	10.1" LED Backlit, 1024x600, up to 1920x1080
LCD-24	24" LED Backlit, 1920x1080
Zoom Magnification	15x-100x
Zoom Range	0.7x-4.5x (1:6.5 zoom ratio)
Working Distance	96mm
Field Of View	16mm-2.8mm
Expanded Magnification	4.65x-1080x
Expanded Field of View	0.3mm-77mm
Working Distance Range	46mm-331mm
Illumination	LED ring light with intensity adjustment
Power Supply	120V AC 50/60Hz
Computer Requirements	Windows 8 or 7, and USB 2.0
Stands	Post stand with focus block (PS)
	Track stand with focus block (TS)
	Post stand with back lighting (PSHF)
	Track stand with LED back lighting and focus block (TSLB)
	Multi position multi angle viewing boom stand with focus block (BS) Hydraulic arm stand mounting to table edge, with focus block (HA)
Warranty	One Year Warranty

Options	
<b>3D angle lens adapter</b>	
LR-35	3D 360° manual rotation with 35° Oblique angle view
<b>Lens adapters</b>	
LA-03	0.3x reducer, 331mm WD
LA-05	0.5x reducer, 199mm WD
LA-075	0.75x reducer, 131mm WD
LA-15	1.5x magnifier, 60mm WD
LA-20	2x magnifier, 46mm WD
HL-5x	5x infinity high power objective, NA 0.13, 44.5mm WD
HL-10x	10x infinity high power objective, NA 0.28, 34mm WD
HR-20x	20x infinity high power objective, NA 0.29, 31mm WD
<b>Lighting options</b>	
LX-CA	Coaxial lighting module for LX-100
LX-CA-LED	LED point light for coaxial lens module for LX-CA
<b>XY stage options</b>	
XY-76	75x56mm travel, with 116x96mm back light window. For track stand and post stand with back lighting
XY-76R	XY stage of 180X155X34mm, with XY Travel distance: 75X55mm, plus rotational dial. For track stand and post stand with back lighting
XY-1711	XY manual stage for easy movement of large PCB board, 17"x11" size, 11"x9" travel range
XY-1711G	XY manual stage for easy movement of stencil, 17"x11" size, 11"x9" travel range, glass plate for back lighting
<b>Advance measurement software options</b>	
IMS-1000	Advance dimensional measurement software XY, circle radius & diameter, angle, area, center to center. export to Excel, infinity depth of focus, photo stitching image comparison, overlay for quick gauging go/no go
SM-1	Stage micrometer for calibration

LX-100 lens configuration and specifications													
Auxiliary Lens	Working Distance (mm)	LX-100 zoom lens body											
		0.35X		0.5X		0.75X		1.0X		1.5X		2.0X	
		Mag.	FOV (mm)	Mag.	FOV (mm)	Mag.	FOV (mm)	Mag.	FOV (mm)	Mag.	FOV (mm)	Mag.	FOV (mm)
0.3X	331	4.65X-31X	77-12	6X-41X	59-9	9X-61X	39-6	12X-81X	29-4	18X-121X	19.6-3	24X-162X	14.7-2
0.5X	198	7.8X-51X	46-7	10X-68X	35-5	15X-101X	23.5-4	20X-135X	17.6-3	31X-203X	11.8-2	41X-270X	8.8-1.3
0.75X	131	11.6X-77X	31-4.7	15X-101X	23.5-3.6	23X-152X	15.7-2.4	30.6X-202X	12-1.8	46X-304X	7.8-1.2	61X-405X	6-0.9
1.0X	96	15.5X-102X	23-3	20X-135X	17.6-2.7	30.6X-202X	12-1.8	41X-270X	8-1.4	61X-405X	6-0.9	81.6X-540X	4-0.7
1.5X	63	23X-154X	15-2.3	31X-203X	11.8-1.8	46X-304X	7.8-1.2	61X-405X	6-0.9	92X-607X	4-0.6	122X-810X	3-0.4
2X	46	31X-205X	11.6-1.7	41X-270X	8.8-1.3	61X-405X	6-0.9	81.6X-540X	4-0.7	122X-810X	3-0.4	163X-1080X	2-0.3